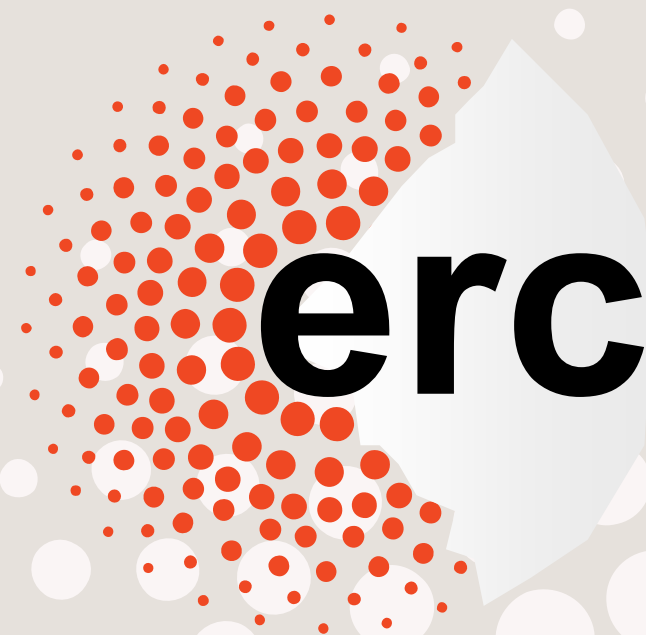


# The European Research Council

## Social Sciences and Humanities and the issue of Interdisciplinarity at ERC

*Angela Liberatore*  
*Head of Unit Social Sciences and Humanities*



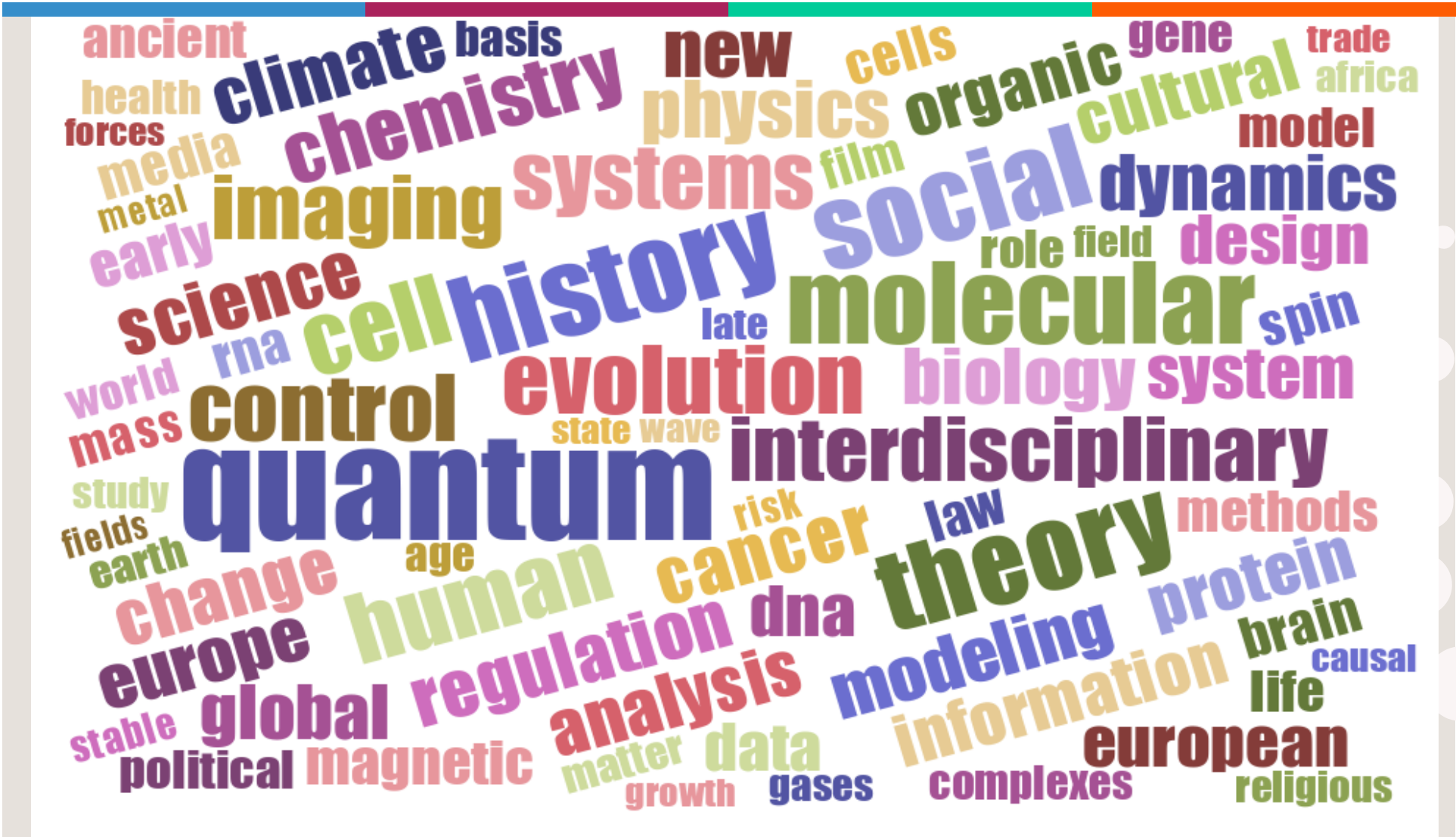
# Some key questions

**WHO** decides **WHAT** is **INTERDISCIPLINARITY**  
(& multi, trans-disciplinarity) and  
**WHETHER** or **WHEN** it is a good idea to go for it?

Should SH 'open up' more and move  
*from 'victimisation' to 'empowerment'*  
when engaging with interdisciplinarity ?

# Interdisciplinarity and ....

(interdisciplinary in about 450 projects and frequency of terms in their keywords)



# Some general principles

- ERC covers ALL areas of research
- 25 Panels (10 PE, 9 LS, 6 SH): can be seen as large body of panel evaluators where the expertise of all ~300 are brought to bear
- ID as bottom-up choice by PI vs prescription by ERC
- No specific panel for ID proposals: all panels can have ID
- Many panels already very inter/multidisciplinary
- Cross-panel proposals get cross-panel evaluation

# Evaluation Panel Structure (WP2017)

## Life Sciences

- LS1 Molecular and Structural Biology and Biochemistry
- LS2 Genetics, Genomics, Bioinformatics and Systems Biology
- LS3 Cellular and Developmental Biology
- LS4 Physiology, Pathophysiology and Endocrinology
- LS5 Neurosciences and Neural Disorders
- LS6 Immunity and Infection
- LS7 Diagnostic Tools, Therapies and Public Health
- LS8 Evolutionary, Population and Environmental Biology
- LS9 Applied Life Sciences and Non-Medical Biotechnology

## Physical Sciences & Engineering

- PE1 Mathematics
- PE2 Fundamental Constituents of Matter
- PE3 Condensed Matter Physics
- PE4 Physical and Analytical Chemical Sciences
- PE5 Synthetic Chemistry and Materials
- PE6 Computer Science and Informatics
- PE7 Systems and Communication Engineering
- PE8 Products and Process Engineering
- PE9 Universe Sciences
- PE10 Earth System Science

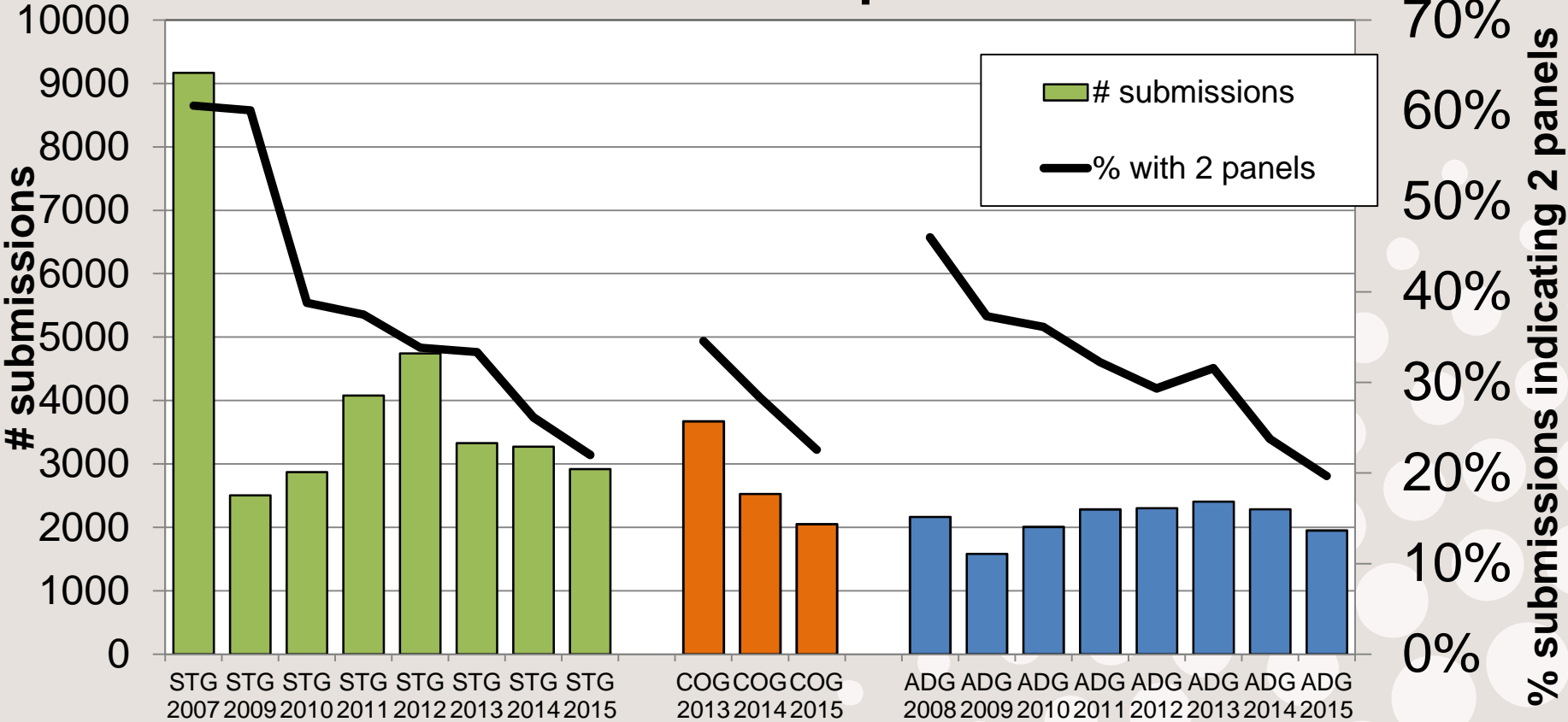
## Social Sciences and Humanities

- SH1 Individuals, Markets and Organisations
- SH2 Institutions, Values, Environment and Space
- SH3 The Social World, Diversity, Population
- SH4 The Human Mind and Its Complexity
- SH5 Cultures and Cultural Production
- SH6 The Study of the Human Past



# Submission by Call and proportion of applicants indicating two evaluation panels

## Submissions with 2 panels selected

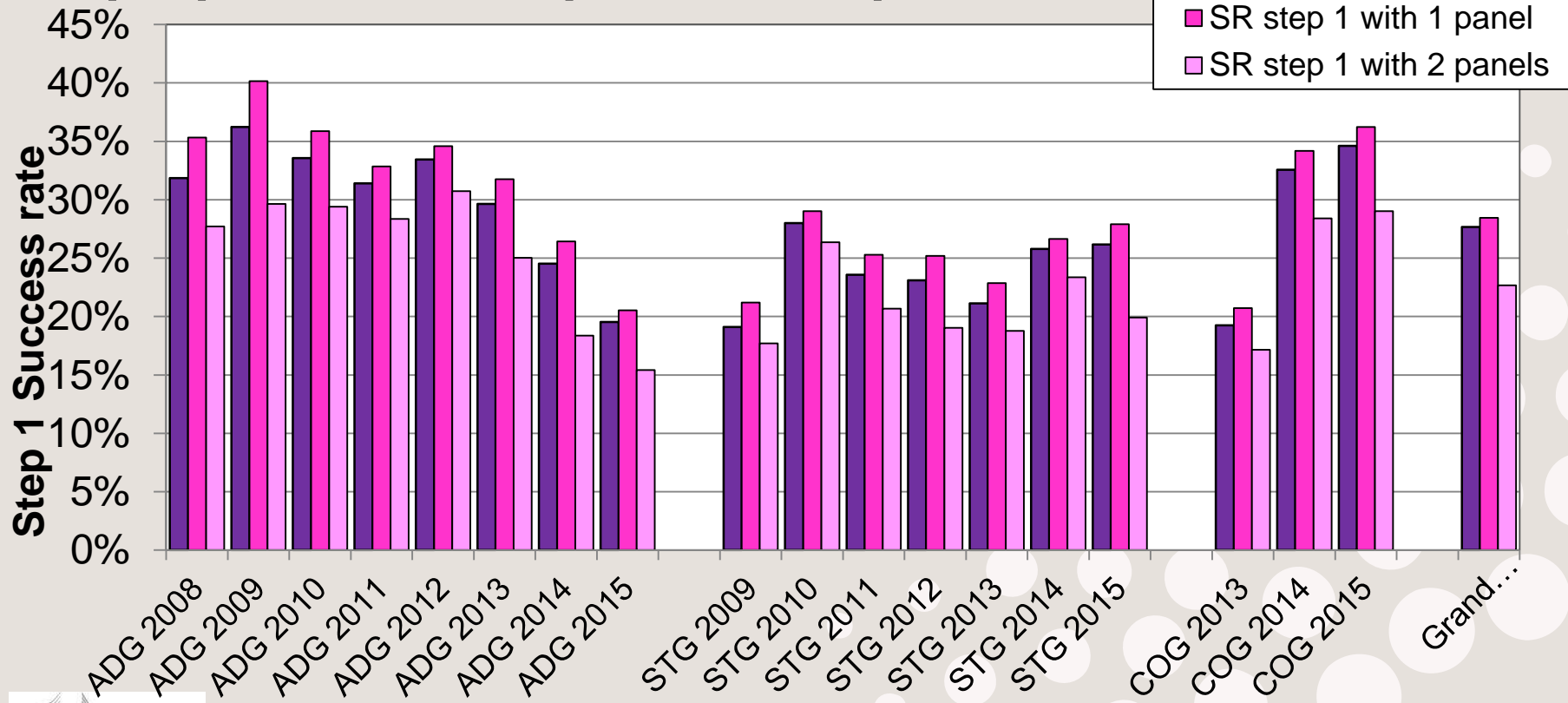


# Cross-panel proposals : current approach

- Dedicated space in the proposal for the PI to justify the cross-panel or cross domain nature of the research.
- At step 1 primary panels should seek reviews from secondary panels for the proposals requiring additional expertise outside their competence.
- At step 2 encourage secondary panel reviews if needed: the same secondary panels (and possibly additional ones) should provide reviews on the previously identified cross-panel proposals.

# Success rate of CP proposals at Step 1 in AdG & StG 2008-2014

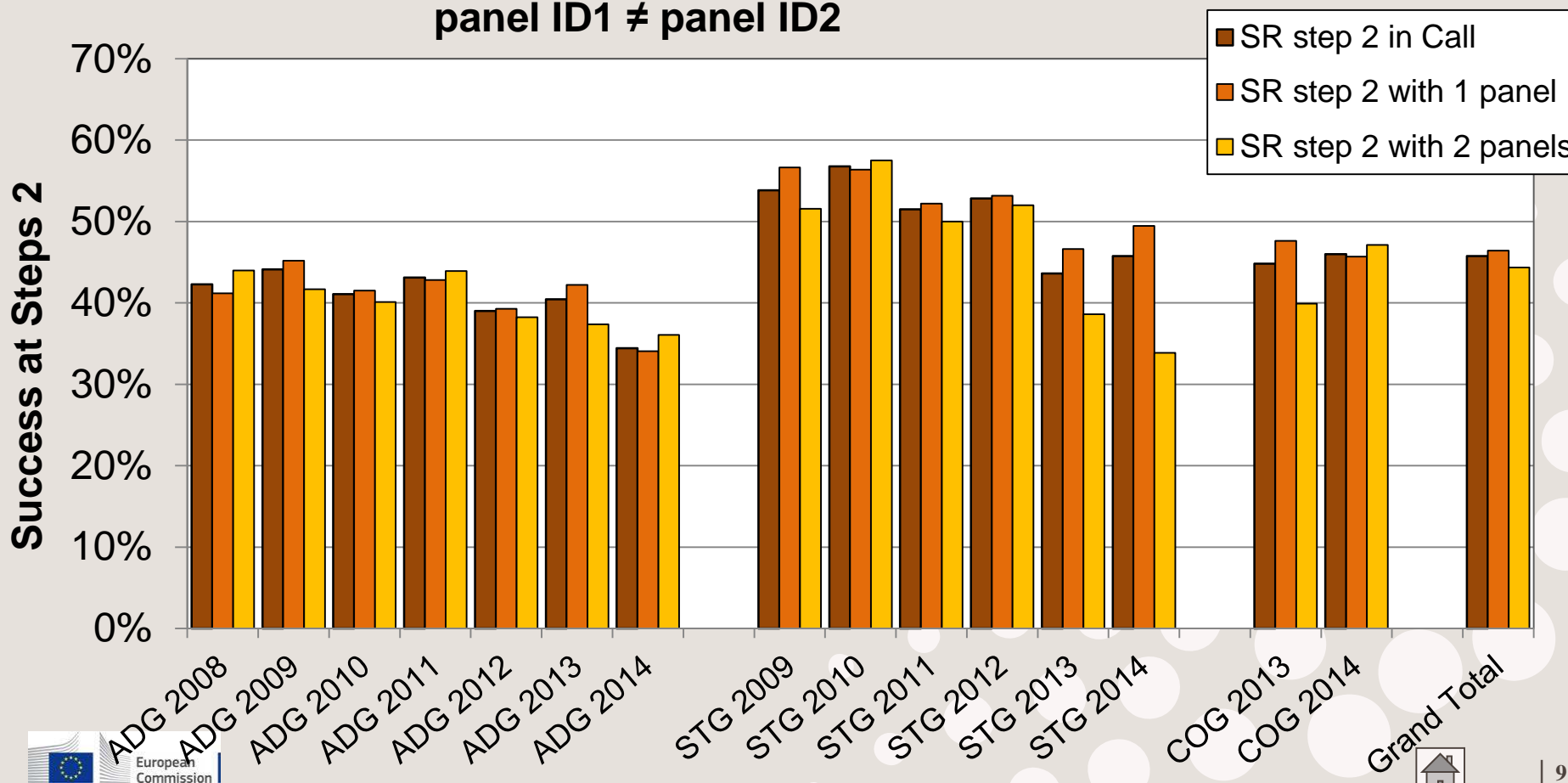
## All Calls 2008-2014 Step 1 success rates of proposals where panel ID1 ≠ panel ID2





# Success rate of CP proposals at Step 2 in AdG & StG 2008-2014

All Calls 2008-2014: Step 2 Success rates for proposals where panel ID1 ≠ panel ID2



# Check: Does the effect vary by domain?

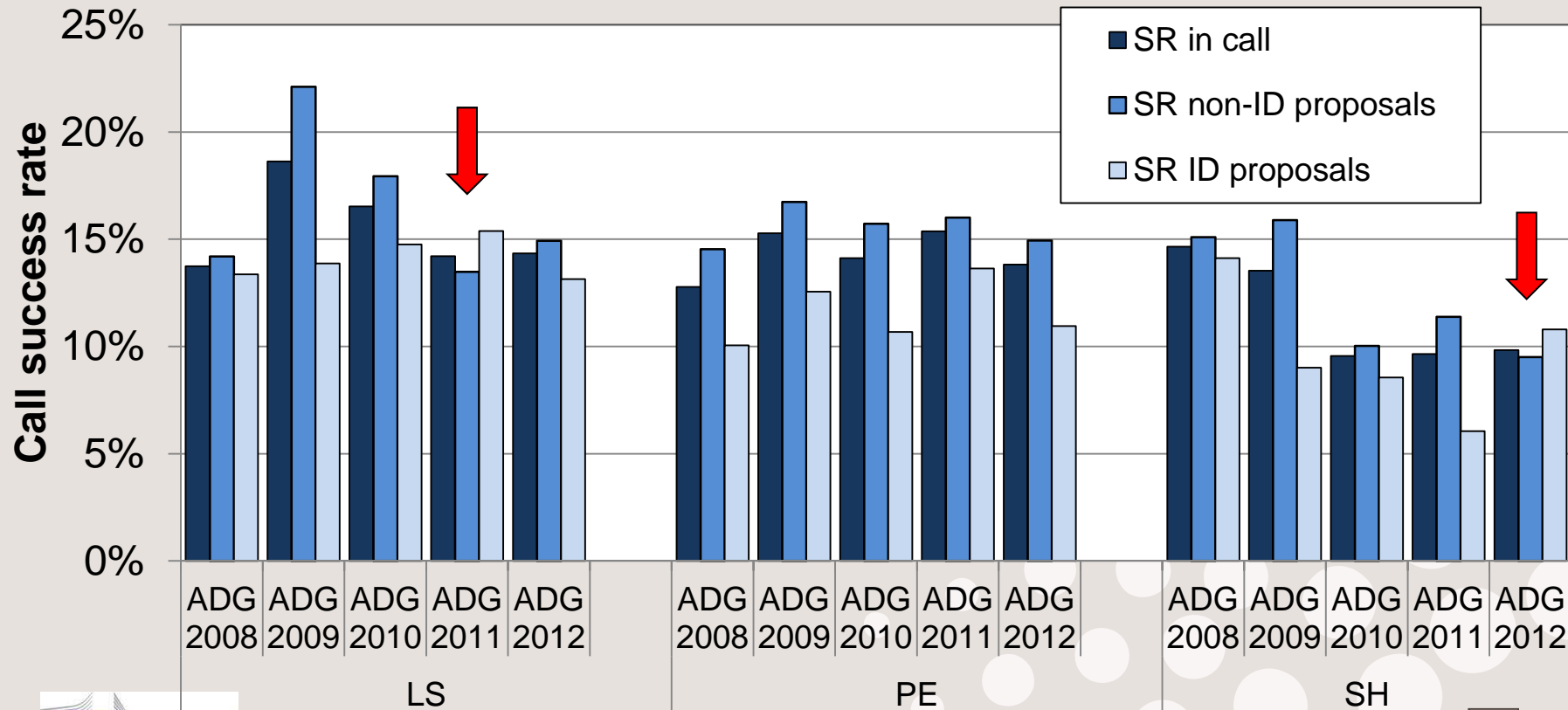
Panel structures were originally developed in a very different manner by domain: e.g. SH and PE are more 'thematic' while LS is more by "levels of complexity"...

Q. Does effect vary by domain (i.e. type of panel structure)?

A. Does not seem so...

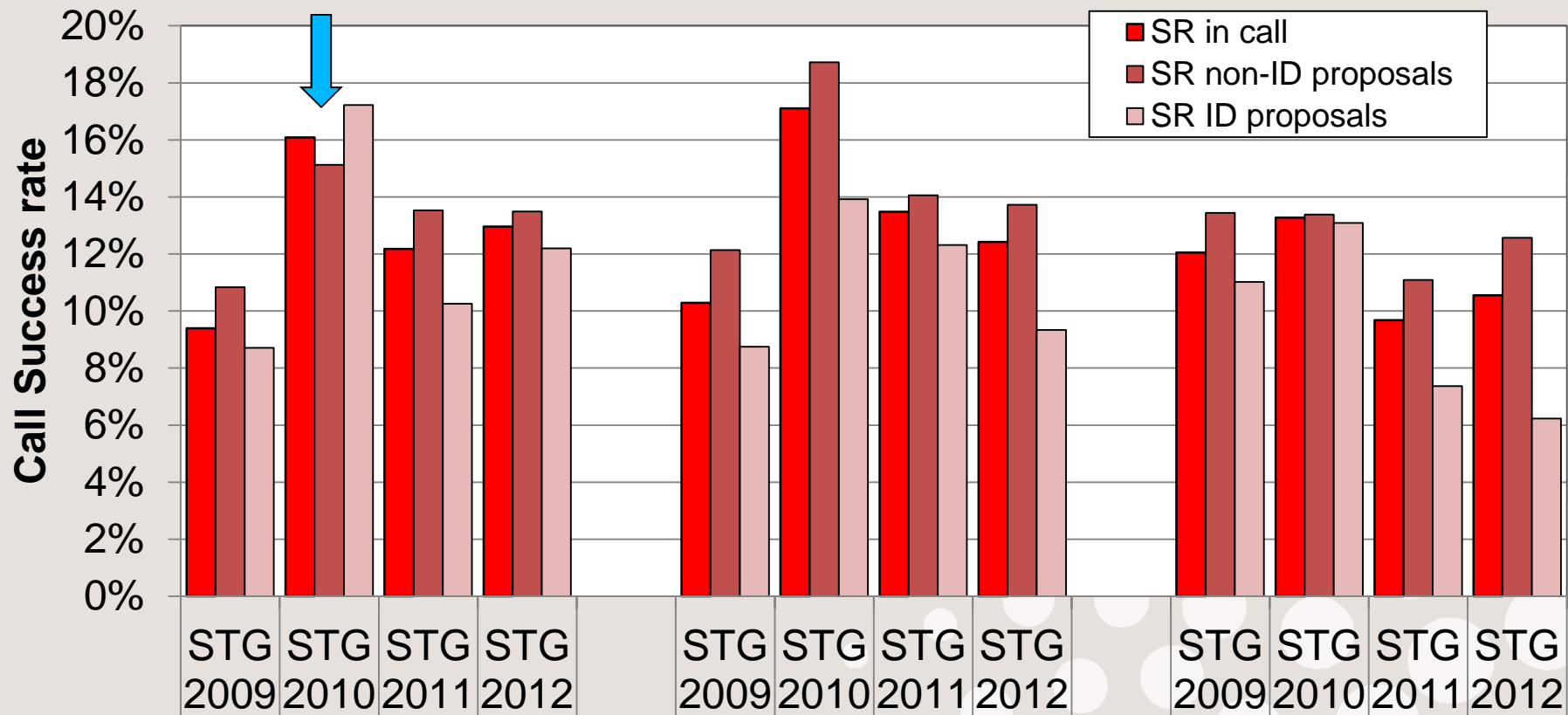
# AdG Overall success rates by domain

## AdG 2008-2012 Success rate of ID proposals by domain panel ID1 ≠ panel ID2



# StG Overall success rates by domain ID vs non-ID evaluated proposals

ERC StG 2009-2012 Success rates by domain for proposals with panel ID1 ≠ panel ID2

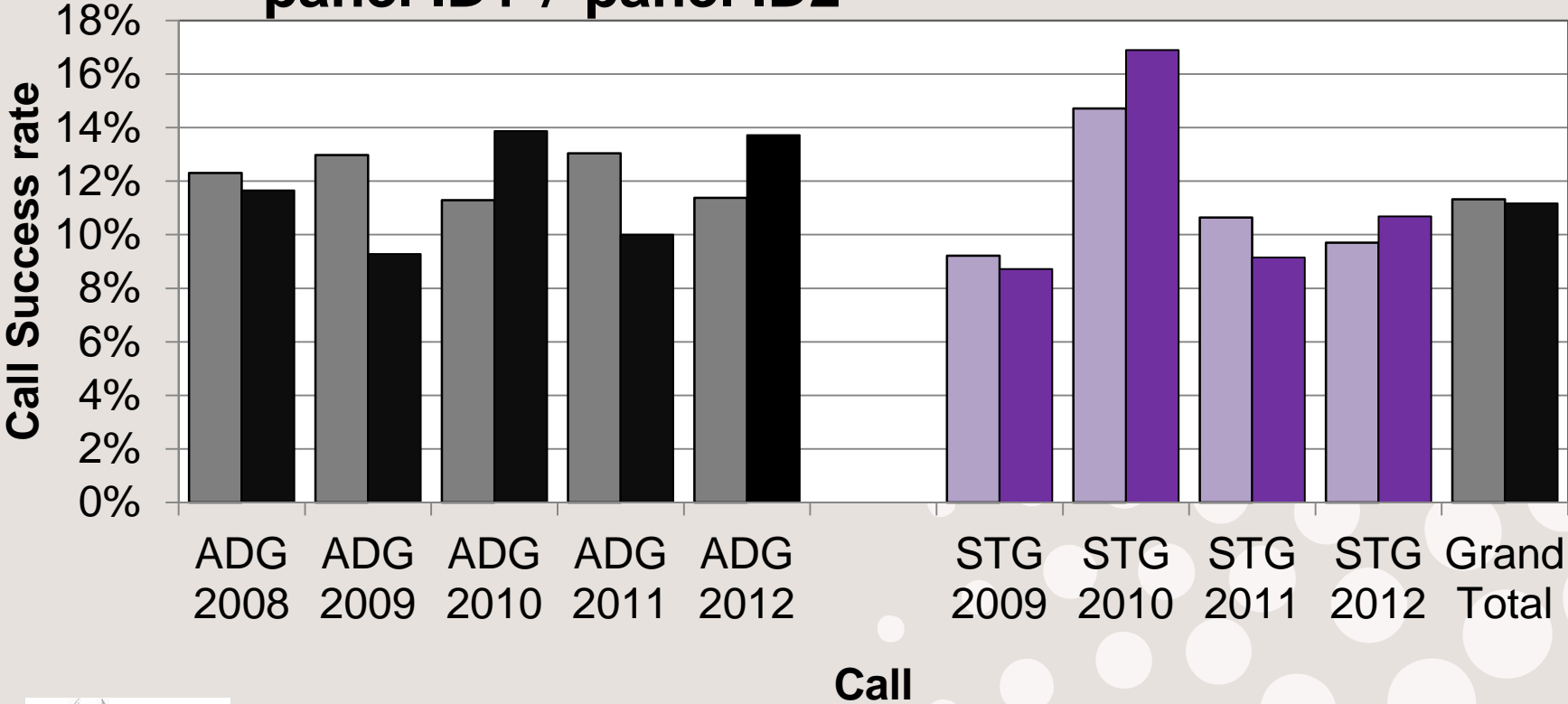




# Overall Call success rate – 9 calls ID non-cross-domain vs ID cross-domain

## AdG StG 2008-2012 Success rate of ID and cross domain proposals panel ID1 ≠ panel ID2

- SR ID non-CD proposals
- SR ID Cross-domain proposals

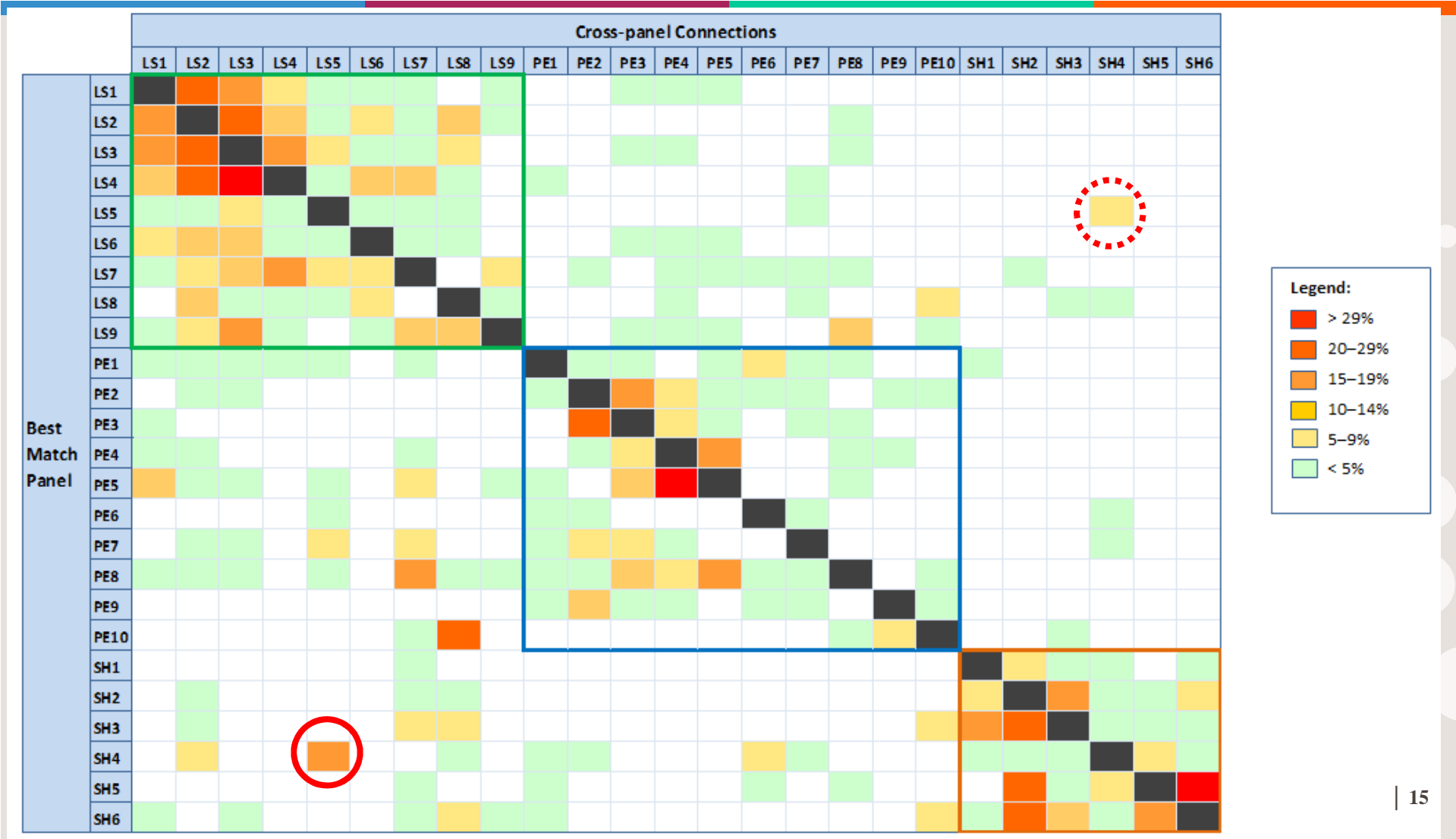


# Cross-panel/cross-domain connections

- ✓ Over 4300 grants awarded in FP7 (2007–2013)
- ✓ On average, 42% of the projects funded by any of the panels have a connection to another panel (mostly same domain)
- ✓ This figure varies across the three domains: LS = 54%, PE = 31%, SH = 45%
- ✓ SH and PE 29% with other domains, LS 12% (most connection *towards* LS)
- ✓ SH proactive enough?

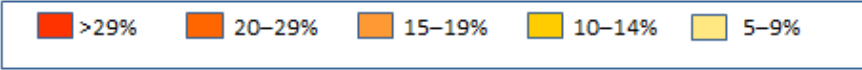
		Cross-panel Connections		
		LS	PE	SH
Best Match Panel	LS	88%	9%	3%
	PE	27%	71%	2%
	SH	21%	8%	71%

# 1. Cross-panel/cross-domain connections map



# 2. Main research topics behind the cross-panel connections: SH domain

		Cross-panel Connections					
		SH1	SH2	SH3	SH4	SH5	SH6
Best Match Panel	SH1		- Violence and conflict resolution - Social structure, social mobility, interethnic relations				
	SH2	- Income distribution and poverty		- Environment, resources and sustainability - Migration - Ageing, health and society			- History of ideas, history of sciences and techniques - Cultural history, history of collective identities and memories
	SH3	- Microeconomics, behavioural economics - Statistical methods	- Social structure, social mobility, interethnic relations - Work and welfare - Global and transnational governance, international studies				
	SH4					- History of philosophy	
	SH5		- Myth, ritual, religious studies - Communication networks, media, information society		- Linguistics		- Medieval history - History of Ideas - Cultural history - Ancient history
	SH6		- Legal studies, constitutions, human rights - Social structure, social mobility, interethnic relations - Myth, ritual, religious studies	- Environmental change and society - Geo-information and spatial data analysis			- Textual philology, palaeography and epigraphy - Cultural studies, cultural diversity





# Present and future ...

- ScC and ERCEA continue to monitor ID carefully and with data
- Synergy Grant Call proposed by ScC for 2018: funding of ID research a key aspect
- Funding of ID research as part of ex-ante 'mapping' (SBP) and ex-post assessment (SAP)

**And to conclude....**

***QUESTIONS?***

***THANK YOU / OBRIGADA !***



# European Research Council: info

More information: [erc.europa.eu](http://erc.europa.eu)

National Contact Point: [erc.europa.eu/national-contact-points](http://erc.europa.eu/national-contact-points)

Sign up for news alerts: [erc.europa.eu/keep-updated-erc](http://erc.europa.eu/keep-updated-erc)

Follow us on



[www.facebook.com/EuropeanResearchCouncil](http://www.facebook.com/EuropeanResearchCouncil)



[twitter.com/ERC\\_Research](http://twitter.com/ERC_Research)



[www.linkedin.com/company/european-research-council](http://www.linkedin.com/company/european-research-council)